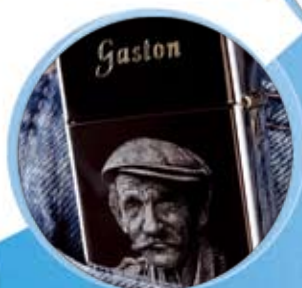


ENGRAVING MACHINE

M20 PIX



GRAVOGRAPH

www.gravograph.com

M20 Pix

PHOTO ENGRAVER, IDEAL FOR:

- METALLIC GIFT ITEMS, SUCH AS LIGHTERS, KEY CHAINS AND GIFT BOXES.

- METALLIC MEDALS, PENDANTS AND JEWELRY ITEMS.

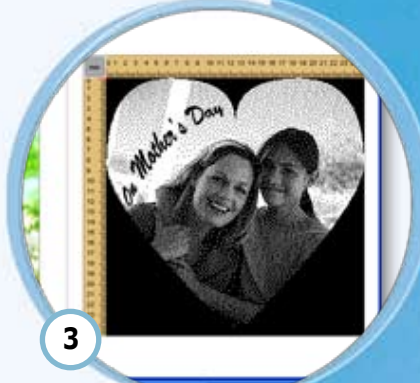
- **Personalisation equipment** , specially-designed for picture and text engraving.
- Suitable for metallic surfaces, whether flat, convex or concave.
- The **complete pack** includes the engraving machine (diamond marking technology), QuickPix software (Windows® compatible) and accessories.
- All regular image formats can be used (.bmp, .jpg, .gif or .tiff) from scanners, digital devices or USB drives etc. **QuickPix makes importing the image and preparing the engraved design quick and easy.** The software calculates the dots to engrave for you.
- **User-friendly:** the image and text are positioned very easily on the object to engrave. The job may be simulated thanks to an integrated laser pointer.
- **The engraving process is automatic,** the diamond tip is robust and long lasting. The M20Pix diamond marking technology ensures that your engraving is high-precision, high-quality and will not wear off over time.
- Personalise jewelry or a key chain with a picture, the owner's initials or any other text to make your object precious and unique.
- Engraving on gold, silver, copper, platinum, aluminium, stainless steel, etc.



Original photo



Import and position the photo in the template



Add your text and QuickPix calculates the dots to engrave



Let the machine engrave for you



A precious and unique engraving



- **Overall machine size:**
- 345 x 315 x 305 mm
- **Weight:**
- machine: 10 kg
- **Engraving Area:**
- 100 x 100 mm
- **Z stroke:**
- 35 mm
- **Maximum dimensions of engravable objet:**



信發國際發展有限公司

Xinfa International Ltd

香港九龍新蒲崗大有街34號新科技廣場15樓11室
Unit 1511, New Tech Plaza, 34 Tai Yau Street,
Sanpokong, Kowloon, Hong Kong
Tel : (852) 2363 7277
Fax : (852) 2363 7767
info@hkgravograph.com
www.hkgravograph.com